



**ROLMAN
WORLD**

castalia suministros
industriales
**BALL BEARING
UNITS**

**THE WORLD
IN MOTION**

FYH[®]



www.rolman.com

FYH



Founded in 1950, FYH is the Japanese manufacturer of industry-leading mounted bearing solutions.

The company has focused on the development of products suited to the harshest conditions, and the thousands of combinations of pillow blocks possible due to the combination of hundreds of variants of insert bearing and housings has contributed greatly to the development of industrial applications. Taking advantage as a specialized manufacturer of pillow blocks, FYH has launched many product developments to conquer the most severe environments - temperature-resistant, corrosion-resistant, dust-proof, and in line with end user needs that are becoming increasingly diverse, compact and lightweight units (clean series), stainless steel series, ceramic series, etc.

In addition to ball bearings, in 2012 FYH started production of self-aligning roller bearing units. These long life Plummer Block units are built to withstand more severe conditions, whilst enabling easy mounting.



CONTENTS

- Structure & Features of FYH Product Range

- Ball Bearing Unit Models

- Bearing Insert Models

- Bearing Types

- 1.0 Pillow Block Units
- 2.0 4-Bolt Flange Units
- 3.0 Oval Flange Units
- 4.0 4-Bolt Flange Cartridge Units
- 5.0 Pressed Steel Flange Units
- 6.0 Take Up Units
- 7.0 Other Units
- 8.0 Ball Bearing Inserts

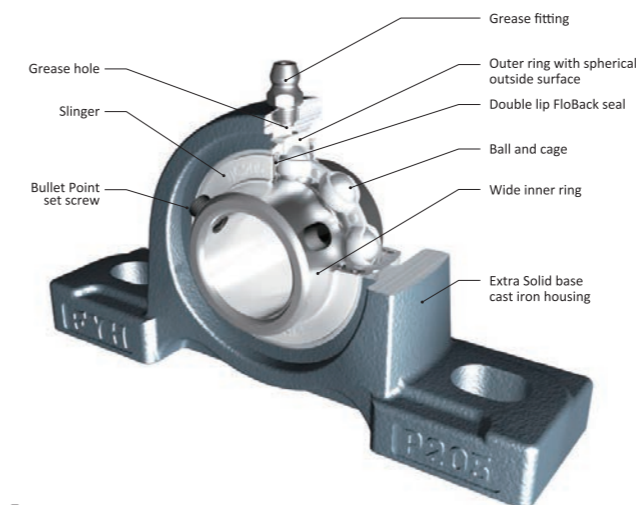
- Bearing Series for Special Conditions

- o High & Low Temperature Series
- o Corrosion Resistant Series
- o Stainless Steel Series
- o Ceramic Ball Series
- o Air Handling Series
- o Dust Resistant Series
- o Bullet Point Set Screws
- o Clean Series
- o Concentric Locking Collar
- o Z-Lock Sleeve
- o Backside Guard
- o Spherical Roller Bearing Units



STRUCTURE & FEATURES

FYH Ball Bearing Units are manufactured to exacting standards comprising of grease sealed deep groove ball bearings and housings in various forms. Self-aligning units allow for easy installation and are supplied with grease fittings.



Features:

- SUPREME LOAD CARRYING CAPACITY**

- o internal structure identical to single row deep groove ball bearings
- o bears significant radial load, & a good deal of axial load in both directions
- o hardened steel balls exhibit a high degree of "roundness"
- o races highly polished to enable a smooth ride at a range of speeds

- SELF-ALIGNMENT & OPTIMAL FIT**

- o units self-align in the housing due to the spherical OD of the insert and the concave inner diameter of the housing into which it fits
- o allows the bearing unit to self-adjust for shaft deviation and reduce abnormal bearing load, guaranteeing original rated bearing life

- SUPERIOR SEALING PERFORMANCE**

- o FloBack seal installed to the outer ring of the bearing, and the slinger seal is installed to the inner ring of the bearing
- o grease leakage from the interior of the bearing is prevented, and contaminants, such as dust and water, are stopped from entering



Double contact seal

New flow back seal will contribute to the longevity of the bearing.

- SIMPLE LUBRICATION**

- o units are tapped to accept a grease fitting which is also supplied with every mounted unit
- o bearings are pre-lubricated at the factory and do not require additional grease upon installation
- o when operating in excessively moist, dusty, or hot environments, it is recommended that grease be supplied at regular intervals



Single Point Automatic Lubricators

Please ask regarding our full range of automatic lubricators, and wide range of bearing greases for specific applications

- HIGHLY RIGID & RUGGED CAST IRON HOUSINGS**

- o housings designed to be optimised for reduction of deformation due to centralization of stress and load
- o only the best material is selected to be cast by a highly advanced technique depending on the housing
- o powder coating helps resist corrosion
- o solid base pillow block housings seat better and produce a more stable mounting configuration that significantly reduces vibration.
- o support ribs have been eliminated to make more room for mounting bolts and washers, whilst being more than 30% stronger than before but also reducing housing weight

The new housing downward destruction strength means that the inserts break before the housings!



- SIMPLE INSTALLATION & HANDLING**

- o units interchange with many different models and can be bolted to machinery without any modification
- o exact amount of clearance is allowed between the bore and the shaft to allow a perfect fit
- o units do not require any additional lubrication or seal installation
- o handling & downtime can be drastically reduced.
- o Four different locking mechanisms are available:
 - Set Screw (UC)
 - Eccentric Locking Collar (NA)
 - Tapered Adapter (UK)
 - Concentric Collar (NC)





BALL BEARING UNIT MODELS

Model	Type	Bearing Bore Dia. Surface (fixing to shaft)	Model Code	Shaft Diameter					
				inch		mm			
				min	max	min	max		
1 Pillow Block Units	1 Pillow Block Units	with set screws	UCP	1/2	4	12	140		
		with eccentric locking collar	NAP	1/2	2.15/16	12	75		
			NAP-E	1.3/16	2.15/16	-	-		
			NAPK	1/2	2.15/16	12	75		
		with concentric locking collar	NCP	3/4	2.7/16	20	60		
		tapered bore with adapter	UKP	3/4	4.1/2	20	125		
	2 Thick Pillow Block Units	with set screws	UCIP	1.1/2	4	40	140		
		tapered bore with adapter	UKIP	1.1/4	4.1/2	35	125		
	3 Tapped Base Pillow Block Units	with set screws	UCPA	1/2	2	12	50		
			UCPAN	3/4	1.7/16	20	35		
		with concentric locking collar	NCPA	3/4	2	20	50		
			NCPAN	3/4	1.7/16	20	35		
	4 High Based Pillow Block Units	with set screws	UCPH	1/2	2	12	50		
		5 Narrow Inner Ring Bearing Pillow Block Units	with set screws	SBP-RKP8	3/4	1.1/2	20	40	
			with eccentric locking collar	SAP-FP9	3/4	2.3/16	20	55	
			with set screws	SBPAN-RKP8	3/4	1.7/16	20	35	
		with eccentric locking collar	SAPAN-FP9	3/4	1.7/16	20	35		
	6 Light Pillow Blocks	with set screws	BLP	1/2	1.1/2	12	40		
		with eccentric locking collar	ALP	1/2	1.9/16	12	40		
	7 Compact Pillow Block Units	with set screws	UP	-	-	10	30		
8 Corrosion Resistant Pillow Block Units	with set screws	UCSP-H1S6	1/2	2.7/16	12	60			
		UCSPA-H1S6	1/2	1.9/16	12	40			
		USP-S6	-	-	10	30			
		UCVP-S6	3/4	2	20	50			
		UCVP-E57	3/4	2	20	50			
		UCVPAN-E57	3/4	1.7/16	20	35			
		9 Stamped Steel Pillow Block Units	with set screws	SBPP	1/2	1.1/4	12	30	
			with eccentric locking collar	SAPP	1/2	1.1/4	12	30	
		2 4-Bolt Flange Units	1 4-Bolt Flange Units	with set screws	UCF	1/2	4	12	140
					UCF-E	1/2	3.7/16	12	85
with eccentric locking collar	NANF			1/2	2.7/16	12	60		
with concentric locking collar	NCF			3/4	2.7/16	20	60		
	NCF-E		3/4	2.7/16	20	60			
	tapered bore with adapter		UKF	3/4	4	20	125		
2 Square Piloted 4-Bolt Flange Units	with set screws		UCFS	1	4	25	140		
	tapered bore with adapter		UKFS	3/4	4.1/2	20	125		
3 Narrow Inner Ring bearing 4-Bolt Flange Units	with set screws		SBF-RKP8	3/4	1.1/2	20	40		
	with eccentric locking collar		SAF-FP9	3/4	2.3/16	20	55		
4 Corrosion Resistant 4-Bolt Flange Units	with set screws		UCSF-H1S6	3/4	2.7/16	20	60		
			UCSF-EH1S6	3/4	2.7/16	20	60		
		UCVF-S6	3/4	1.9/16	20	40			
		UCVF-E57	3/4	1.9/16	20	40			
		UCVF-E57	3/4	1.9/16	20	40			
3 Oval Flange Units	1 2-Bolt Flange Units	with set screws	UCFL	1/2	4	12	120		
			UCFL-E	1/2	3.1/4	12	85		
		with eccentric locking collar	NANFL	1/2	2.3/16	12	55		
		with concentric locking collar	NCFL	3/4	2.7/16	20	60		
		NCFL-E	3/4	2.7/16	20	60			
		tapered bore with adapter	UKFL	3/4	4	20	110		
	2 Adjustable 2-Bolt Flange Units	with set screws	UCFA	1/2	2.3/16	12	55		
	3 3-Bolt Flange Units	with set screws	UCFB	1/2	2	12	50		
	4 Narrow Inner Ring Bearing 2-Bolt Flange Units	with set screws	SBFL-RKP8	3/4	1.1/2	20	40		
		with eccentric locking collar	SAFL-FP9	3/4	2.3/16	20	55		
	5 Light 3-Bolt Flange Units	with set screws	SBTFD-H4RKP8	1/2	1.7/16	12	35		
		with eccentric locking collar	SATFD-FH4P9	1/2	1.7/16	12	35		
	6 Light 2-Bolt Flange Units	with set screws	BLF	1/2	1.7/16	12	35		
		with eccentric locking collar	ALF	1/2	1.7/16	12	35		
	7 Compact 2-Bolt Flange Units	with set screws	UFL	-	-	8	30		
	8 Corrosion Resistant Series 2-Bolt Flange Units	with set screws	UCSFL-H1S6	1/2	2	12	50		
			UCSFL-EH1S6	1/2	2	12	50		
			USFL-S6	-	-	10	30		
UCVFL-S6			3/4	1.9/16	20	40			
UCVFL-E57			3/4	1.9/16	20	40			
UCVFL-E57			3/4	1.9/16	20	40			
9 Corrosion Resistant Series 3-Bolt Flange Units	with set screws	UCVFB-E57	3/4	1.7/16	20	35			

BALL BEARING UNIT MODELS

Model	Type	Bearing Bore Dia. Surface (fixing to shaft)	Model Code	Shaft Diameter			
				inch		mm	
				min	max	min	max
4 4-Bolt Flange Cartridge Units	1 4-Bolt Flange Cartridge Units	with set screws	UCFC	1/2	4	12	100
			UCFCX-E	1	4	25	100
			UCFCF	7/8	2.3/16	25	55
		with concentric locking collar	NCFC	3/4	2.7/16	20	60
		tapered bore with adapter	UKFC	3/4	3.1/2	20	90
	2 Narrow Inner Ring Bearing 4-Bolt Flange Cartridge Units	with set screws	SBFC-RKP8	3/4	1.1/2	20	40
		with eccentric locking collar	SAFC-FP9	3/4	2.3/16	20	55
		with set screws	UCSFC-H1S6	3/4	1.9/16	20	40
	5 Stamped Steel Flange Units	1 Stamped Steel 3-Bolt Flange Cartridge Units	with set screws	SBPF	1/2	1.7/16	12
with eccentric locking collar			SAPF	1/2	1.7/16	12	35
2 Stamped Steel 2-Bolt Flange Units		with set screws	SBPFL	1/2	1.7/16	12	35
		with eccentric locking collar	SAPFL	1/2	1.7/16	12	35
6 Take Up Units	1 Take Up Units	with set screws	UCT	1/2	4	12	140
			UCT-E	1/2	3.7/16	12	85
		with eccentric locking collar	NAT-E	1/2	2.15/16	12	75
		with concentric locking collar	NCT	3/4	2.7/16	20	60
			NCT-E	3/4	2.7/16	20	60
			tapered bore with adapter	UKT	3/4	4.1/2	20
	2 Narrow Slot Take Up Units	with set screws	UCTRS	7/8	1.7/16	25	35
		with set screws	UCST-H1S6	3/4	2	20	50
	3 Corrosion Resistant Series Take Up Units	with set screws	UCST-EH1S6	3/4	2	20	50
		with set screws	UCTH	1/2	2.1/2	12	65
	4 Section Steel Frame Take Up Units	with set screws	UCTL	-	-	20	45
		with set screws	UCTU	-	-	40	90
5 Channel Steel Frame Take Up Units	with set screws	SBPTH	-	-	12	25	
	with set screws	SBNPTH	-	-	12	25	
7 Other Units	1 Cartridge Units	with set screws	UCC	1/2	4	12	140
		tapered bore with adapter	UKC	3/4	4.1/2	20	125
	2 Hanger Units	with set screws	UCHA	1/2	3	12	75

BEARING INSERT MODELS

Model	Type	Bearing Bore Dia. Surface (fixing to shaft)	Model Code	Shaft Diameter				
				inch		mm		
				min	max	min	max	
8 Ball Bearing Inserts	1 UC Inserts	with set screws	UC	1/2	4	12	140	
		UC Inserts (Stainless Steel)	UC-S6	1/2	2.7/16	12	60	
		2 UK Inserts	tapered bore with adapter	UK	3/4	4.1/2	20	125
		3 NC Inserts	with concentric locking collar	NC	3/4	2.7/16	20	60
		4 NA Inserts	with eccentric locking collar	NA	1/2	3	12	75
			with set screws	SB	1/2	1.1/2	12	40
		5 SB Inserts (Lightweight)	with set screws	SB-RKP8	1/2	1.1/2	12	40
			with eccentric locking collar	SA	1/2	1.9/16	12	40
		6 SA Inserts (Lightweight)	with set screws	SA-F	1/2	2.3/16	12	55
			with set screws	SU	-	-	8	30
		7 SU Inserts (Small size)	SU Inserts (Small size - Stainless Steel)	SU-S6	-	-	10	30
			8 Cylindrical OD (with lubricating mechanism & snap ring)	with set screws	ER	1/2	2.7/16	12
with concentric locking collar	ERC	3/4		2.7/16	20	60		
9 Cylindrical OD	with set screws	RB	1/2	1.9/16	12	40		
	with set screws	SC	-	-	17	40		
10 Standard	cylindrical bore	SBB-RK	1/2	1.1/2	12	40		
	with set screws	SAA-F	1/2	2.3/16	12	55		
11 Cylindrical OD	with set screws	H2300X	3/4	5	20	125		
	with eccentric locking collar							
12 Adapter								

1. PILLOW BLOCK UNITS

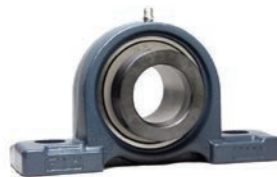
1.1 PILLOW BLOCK UNITS



UCP with Set Screws

UCP is a pillow block unit with a rigid cast iron housing and two specially designed set screws in the inner-ring spaced at 120 degrees for maximum holding power and reliability for a wide variety of applications and operating conditions.

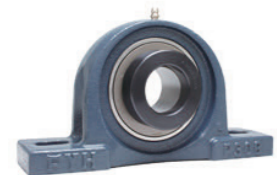
o Duty: Standard, Medium, Heavy



NAP with Eccentric Locking Collar

NAP is a pillow block unit with an eccentric locking collar insert that provides a very secure grip to the shaft that becomes even more secure during continued operation. It is specifically used for single direction/non-reversing rotation.

o Duty: Standard, Heavy



NAP-E with Eccentric Locking Collar



NAPK with Eccentric Locking Collar



NCP with Concentric Locking Collar

NCP is a pillow block unit with a specially designed concentric locking collar that provides 360 degrees of shaft contact. It produces a more concentric lock on the shaft compared to other locking styles and it functions very well for high speed applications.

o Duty: Standard



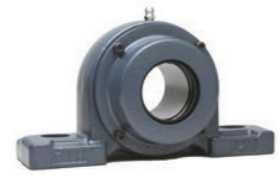
UKP+H with Tapered Bore & Adapter Sleeve

UKP is a pillow block unit with a tapered-bore bearing insert that utilizes an adapter sleeve assembly to produce a highly concentric and secure lock on the shaft to reduce slippage and fretting corrosion even under adverse conditions.

o Duty: Standard, Medium, Heavy

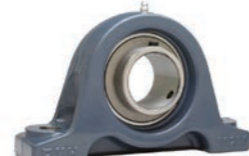


with C or CD Stamped Steel Cover



with FC or FCD Cast Iron Cover

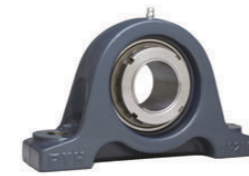
1.2 THICK PILLOW BLOCK UNITS



UCIP with Set Screws

UCIP is a pillow block unit with a highly rigid and rugged casting for particularly demanding applications. The two bolt holes are round for more accurate positioning and the strength ratings of the housing are substantially improved over standard pillow block housings.

o UK style is also available.
 o Duty: Standard, Heavy



UCIP+H with Tapered Bore & Adapter Sleeve

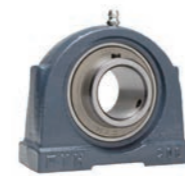
1.3 TAPPED BASE PILLOW BLOCK UNITS



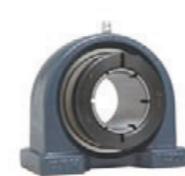
UCPA with Set Screws

UCPA and UCPAN are tapped-base pillow blocks with threaded bolt holes in the bottom of the housings. They are ideal for exact unit positioning and limited space applications. They are available in both inch and metric bolt-hole dimensions.

o NA, NC & UK style are also available.
 o Duty: Standard



UCPAN with Set Screws



NCPA with Concentric Locking Collar



NCPAN with Concentric Locking Collar

1.4 HIGH BASE PILLOW BLOCK UNITS



UCPH with Set Screws

UCPH is a pedestal pillow block unit with an exceptionally high mounting base. It is ideal for applications where a shouldered shaft could create interference with the mounting surface when using a standard pillow block unit.

o Duty: Standard

1.5 NARROW INNER RING PILLOW BLOCK UNITS



SBP-RKP8 with Set Screws

SBP-RKP8 is a lightweight bearing mounted pillow block unit which is ideal for limited space applications and light to moderate duty applications.

SAP-FP9 with SA eccentric locking collar style is also available.

o Duty: Standard



SBPAN-RKP8 with Set Screws

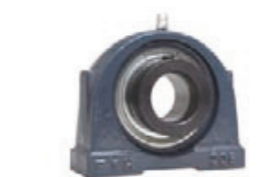
SBP-RKP8 is a lightweight bearing mounted pillow block unit which is ideal for limited space applications and light to moderate duty applications.

SAP-FP9 with SA eccentric locking collar style is also available.

o Duty: Standard

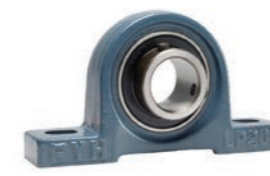


SAP-FP9 with Eccentric Locking Collar



SAPAN-FP9 with Eccentric Locking Collar

1.6 LIGHT PILLOW BLOCK UNITS



BLP with Set Screws

o BLP is a compact and lightweight pillow block unit which is ideal for limited space applications and light to moderate duty applications.

o ALP with SA eccentric locking collar style is also available.

o Duty: Light

1.7 COMPACT PILLOW BLOCK UNITS



UP with Set Screws

UP is a light duty pillow block unit that is part of the Clean Series. It has a zinc-alloy housing for a high level of corrosion resistance and it is capable of accepting end covers to increase contamination resistance.

o Duty: Light



with Stamped Steel Cover Plate

1.8 CORROSION RESISTANT SERIES PILLOW BLOCK UNITS



UCSP-H156 with Set Screws

UP is a light duty pillow block unit that is part of the Clean Series. It has a zinc-alloy housing for a high level of corrosion resistance and it is capable of accepting end covers to increase contamination resistance.

o Duty: Light



USP-S6 with Set Screws

USP-S6 is a light duty stainless pillow block unit that is part of the Clean Series. It has a stainless housing for a high level of corrosion resistance and it is capable of accepting end covers to increase contamination resistance.

o Duty: Light



UCSPA-H156 with Set Screws

UCSPA is a tapped-base pillow block unit with threaded bolt holes in the bottom of the housings. It is made entirely out of stainless steel components for the highest level of corrosion resistance for a mounted bearing unit. It is ideal for exact unit positioning and limited space applications. It is also pre-filled with food grade grease for food processing applications.

o Duty: Standard



UCVP-S6 UCVP-ES7

UCVP and UCVPAN is a pillow block unit with a corrosion resistant thermoplastic housing and the option of either a stainless steel bearing insert or a zinc chromate plated bearing insert. Both bearing inserts offer a high level of corrosion resistance and they are factory lubricated with food grade grease.

o Duty: Standard



UCVPAN-ES7

1.9 STAMPED STEEL PILLOW BLOCK UNITS



SBPP with Set Screws

SBPP is a pillow block unit with a lightweight and compact stamped steel housing for light to moderate duty applications.

SAPP with SA eccentric locking collar style is also available.

o Duty: Light



2. 4-BOLT FLANGE UNITS

2.1 4-BOLT FLANGE UNITS



UCF UCF-E with Set Screws

UCF is a four-bolt flange unit with a rigid cast iron housing and two specially designed set screws in the inner-ring spaced at 120 degrees for maximum holding power and reliability for a wide variety of applications and operating conditions.

- o UK style is also available.
- o Duty: Standard, Medium, Heavy



NANF with Eccentric Locking Collar

NANF is a four-bolt flange unit with an eccentric locking collar insert that provides a very secure grip to the shaft that becomes even more secure during continued operation. It is specifically used for single-direction/non-reversing rotation.

- o Duty: Standard



NCF NCF-E with Concentric Locking Collar

NCF is a four-bolt flange unit with a specially designed concentric locking collar that provides 360 degrees of shaft contact. It produces a more concentric lock on the shaft compared to other locking styles and it functions very well for high speed applications.

- o Duty: Standard



UKF+H with Tapered Bore & Adaptor Sleeve

2.2 SQUARE PILOTED 4-BOLT FLANGE UNITS



UCFS with Set Screws

UCFS is a piloted four-bolt flange unit available with a heavy duty bearing insert for a demanding operating environment. The pilot on the back of the housing allows for precise mounting where necessary.

- o UK style is also available.
- o Duty: Heavy



UKFS+H with Tapered Bore & Adaptor Sleeve

2.3 NARROW INNER RING BEARING 4-BOLT FLANGE UNITS



SBF-RKP8 with Set Screws

SBF-RKP8 is a lightweight bearing mounted four-bolt Flange units which is ideal for limited space applications and light to moderate duty applications.

- o SAF-FP9 with SA eccentric locking collar style is also available.
- o Duty: Standard

2.4 CORROSION RESISTANT SERIES 4-BOLT FLANGE UNITS



UCSF-H1S6 UCSF-EH1S6

UCSF is a four-bolt flange unit that is made entirely out of stainless steel components for the highest level of corrosion resistance for a mounted bearing unit. It is also pre-filled with food grade grease for food processing applications.

- o Duty: Standard



UCVF-S6 UCVF-ES7

UCVF is a four-bolt flange unit with a corrosion resistant thermoplastic housing and the option of either a stainless steel bearing insert or a zinc chromate plated bearing insert. Both bearing inserts offer a high level of corrosion resistance and they are factory lubricated with food grade grease.

- o Duty: Standard

3. OVAL FLANGE UNITS

3.1 2-BOLT FLANGE UNITS



UCFL UCFL-E with Set Screws

UCFL is a two-bolt flange unit with a rigid cast iron housing and two specially designed set screws in the inner-ring spaced at 120 degrees for maximum holding power and reliability for a wide variety of applications and operating conditions.

- o UK style is also available.
- o Duty: Standard, Medium, Heavy



NANFL with Eccentric Locking Collar

NANFL is a two-bolt flange unit with an eccentric locking collar insert that provides a very secure grip to the shaft that becomes even more secure during continued operation. It is specifically used for single-direction/non-reversing rotation.

- o Duty: Standard



NCFL NCF-E with Concentric Locking Collar



UKFL+H with Tapered Bore & Adaptor Sleeve

3.2 ADJUSTABLE 2-BOLT FLANGE UNITS



UCFA with Set Screws

UCFA is an adjustable two-bolt flange unit with a rigid cast iron housing and two specially designed set screws in the inner-ring spaced at 120 degrees for maximum holding power and reliability for a wide variety of applications and operating conditions.

- o Duty: Standard

3.3 3-BOLT FLANGE UNITS



UCFB with Set Screws

UCFB are three-bolt flange brackets with rigid cast iron housings and two specially designed set screws in the inner ring spaced at 120 degrees for maximum holding power and reliability for a wide variety of applications and operating conditions.

- o They are available in both inch and metric bolt-hole dimensions.
- o Duty: Standard

3.4 NARROW INNER RING BEARING 4-BOLT FLANGE UNITS



SBFL-RKP8 with Set Screws

SBFL-RKP8 is a lightweight bearing mounted two-bolt Flange units which is ideal for limited space applications and light to moderate duty applications.

- o SAFL-FP9 with SA eccentric locking collar style is also available.
- o Duty: Standard

3.5 LIGHT 3-BOLT FLANGE UNITS



SBTFD-H4RKP8 with Set Screws

SATFD is a compact and lightweight three-bolt flange unit with square bolt holes for carriage bolts and a ductile iron housing for added strength. It is ideal for limited space applications and light to moderate duty applications.

- o with ductile iron housing
- o Duty: Light

3.6 LIGHT 2-BOLT FLANGE UNITS



BLF with Set Screws

BLF is a compact and lightweight two-bolt flange unit which is ideal for limited space applications and light to moderate duty applications.

- o ALF with SA eccentric locking collar style is also available.
- o Duty: Light

3.7 COMPACT 2-BOLT FLANGE UNITS



UFL with Set Screws

UFL is a light duty two-bolt flange unit that is part of the Clean Series. It has a zinc-alloy housing for a high level of corrosion resistance and it is capable of accepting end covers to increase contamination resistance.

- o Duty: Light



UFL-C, D with Stamped Steel Cover Plate

3.8 CORROSION RESISTANT SERIES 2-BOLT FLANGE UNITS



UCSFL-H1S6 UCSFL-EH1S6

UCSFL is a two-bolt flange unit that is made entirely out of stainless steel components for the highest level of corrosion resistance for a mounted bearing unit. It is also pre-filled with food grade grease for food processing applications.

- o Duty: Standard



USFL-S6 with Set Screws

USFL-S6 is a light duty stainless two-bolt flange unit that is part of the Clean Series. It has a stainless housing for a high level of corrosion resistance and it is capable of accepting end covers to increase contamination resistance.

- o Duty: Light



UCVFL-S6 UCVFL-ES7

UCVFL is a two-bolt flange unit with a corrosion resistant thermoplastic housing and the option of either a stainless steel bearing insert or a zinc chromate plated bearing insert. Both bearing inserts offer a high level of corrosion resistance and they are factory lubricated with food grade grease.

- o Duty: Standard

3.9 CORROSION RESISTANT SERIES 3-BOLT FLANGE UNITS



UCVFB-E57

UCVFB is a three-bolt flange unit that is made entirely out of stainless steel components for the highest level of corrosion resistance for a mounted bearing unit. It is also pre-filled with food grade grease for food processing applications.

- o Duty: Standard

4. 4-BOLT FLANGE CARTRIDGE UNITS

4.1 4-BOLT FLANGE CARTRIDGE UNITS



UCF UCF-E with Set Screws

UCF is a piloted flange cartridge unit with rigid cast iron housings and two specially designed set screws in the inner-ring spaced at 120 degrees for maximum holding power and reliability for a wide variety of applications and operating conditions. The pilot on the back of the housing allows for precise mounting where necessary.

- o UK, NA styles are also available.
- o Duty: Standard, Medium



NFCF with Concentric Locking Collar

NFCF is a piloted flange cartridge unit with a specially designed concentric locking collar that provides 360 degrees of shaft contact. It produces a more concentric lock on the shaft compared to other locking styles and it functions very well for high speed.

- o Duty: Standard



UKFC+H with Tapered Bore & Adapter Sleeve

4.2 NARROW INNER RING BEARING 4-BOLT FLANGE CARTRIDGE UNITS



SBFC-RKP8

SBFC-RKP8 is a lightweight bearing mounted 4-Bolt Flange Cartridge Units which is ideal for limited space applications and light to moderate duty applications.

- o SAFC-FP9 with SA eccentric locking collar style is also available.
- o Duty: Standard

4.3 CORROSION RESISTANT 4-BOLT FLANGE CARTRIDGE UNITS



UCSFC-H1S6

UCSFC is a four-Bolt Flange Cartridge Units that is made entirely out of stainless steel components for the highest level of corrosion resistance for a mounted bearing unit. It is also pre-filled with food grade grease for food processing applications.

- o Duty: Standard

5. PRESSED STEEL FLANGE UNITS

5.1 PRESSED STEEL 3-BOLT FLANGE CARTRIDGE UNITS



SBPF

SBPF is a round three-bolt flange unit with a lightweight and compact stamped steel housing for light to moderate duty applications.

- o SAPF with SA eccentric locking collar style is also available.
- o Duty: Light



SAPF

5.2 PRESSED STEEL 2-BOLT FLANGE UNITS



SBPFL

SBPFL is a two-bolt flange unit with a lightweight and compact stamped steel housing for light to moderate duty applications.

- o SAPFL with SA eccentric locking collar style is also available.
- o Duty: Light

6. TAKE UP UNITS

6.1 TAKE UP UNITS



UCT UCT-E

UCT is a wide-slot take-up unit suitable for use in a side-mount take-up frame. It has a rigid cast iron housing and two specially designed set screws in the inner-ring spaced at 120 degrees for maximum holding power and reliability for a wide variety of applications and operating conditions.

- o UK style is also available.
- o Duty: Standard, Medium, Heavy



NAT-E

NAT is a wide-slot take-up unit with an eccentric locking collar insert that provides a very secure grip to the shaft that becomes even more secure during continued operation. It is specifically used for single-direction/non-reversing rotation.

- o Duty: Standard



NCT NCT-E

NCT is a wide-slot take-up unit with a specially designed concentric locking collar that provides 360 degrees of shaft contact. It produces a more concentric lock on the shaft compared to other locking styles and it functions very well for high speed applications.

- o Duty: Standard



UKT+H with Tapered Bore & Adapter Sleeve



UCTRS

UCTRS is a narrow slot take up unit. It has a rigid cast iron housing and two specially designed set screws in the inner-ring spaced at 120 degrees for maximum holding power and reliability for a wide variety of applications and operating conditions.

- o Duty: Standard

6.2 CORROSION RESISTANT TAKE UP UNITS

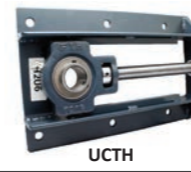


UCST-H1S6 UCST-EH1S6

UCST is a wide-slot take-up unit that is made entirely out of stainless steel components for the highest level of corrosion resistance for a mounted bearing unit. It is also pre-filled with food grade grease for food processing applications.

- o Duty: Standard

6.3 SECTION STEEL FRAME TAKE UP UNITS



UCTH

UCTH is a Take-Up unit with section a steel frame.

- o Duty: Standard

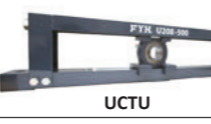
6.4 CHANNEL STEEL FRAME TAKE UP UNITS



UCTL

UCTL is a Take-Up unit with a channel steel frame.

- o Duty: Standard



UCTU

UCTU is a Take-Up unit with a channel steel frame.

- o Duty: Standard, Heavy

6.5 STEEL PLATE FRAME TAKE UP UNITS



SBPTH



SBNPTH

7. OTHER UNITS

7.1 CARTRIDGE UNITS



UCC

UCC is a cartridge unit with two specially designed set screws in the inner-ring spaced at 120 degrees for maximum holding power and reliability for a wide variety of applications and operating conditions. UK, NA, NC styles are also available.

- o Duty: Standard, Medium, Heavy



UKC+H

7.2 HANGER UNITS



UCHA

UCHA is a hanger unit with a threaded-base for simple installation on a threaded pipe mounting configuration. It has two specially designed set screws in the inner-ring spaced at 120 degrees for maximum holding power and reliability for a wide variety of applications and operating conditions.

- o Duty: Standard

8. BALL BEARING INSERTS

8.1 UC INSERTS



UC

- with set screws
 - o UC2 (X, 3)...Standard type
 - o UC2 (X, 3) L3...Triple-lip seal type
 - o UC2-S6...Stainless steel series



UC-L3

This deep grooved ball bearing insert with rubber seal and metal slinger comes pre-lubricated with FYH grease. This insert incorporates a wide inner ring design with FYH Bullet Point setscrews as a standard, at 120 degrees apart to affix the insert to the shafting. The set screw locking design with wide inner ring is the most common insert and can be used in a wide variety of applications. The spherical O.D. of the insert has both a grease groove as well as grease holes to re-lubricate the insert when needed. The UC insert can be ordered with a triple lip seal by using a L3 designation in the suffix. The UC-S6 series incorporates the same design and dimensions as a standard UC insert but is constructed of 316 grade stainless steel for wash



UC-S6

down and other corrosive environments. These inserts come with food grade grease as a standard, and a primary used in food, pharmaceutical, fertilizer and demanding applications.



8.2 UK INSERTS



UK



UK+H

with adapter:

- o UK2 (X, 3)...Standard type
- o UK2 (3) L3...Triple-lip seal type

This deep grooved ball bearing insert with rubber seal and metal slinger comes pre-lubricated with FYH grease. The UK series incorporates a tapered inner ring and uses corresponding adaptors to determine the bore size and affix it to the shaft. The UK series is perfect for applications where shock load can damage other locking devices. The tapered bore with adaptor provides true 360 degree shaft contact that runs the entire length of the inner ring. The spherical O.D. has a grease groove and grease holes for re-lubrication. The insert and adaptor come as two separate items and must be ordered separately. The insert is also available in a triple lip design by adding the L3 designation to the suffix.

8.5 SB INSERTS



SB



SB-RKP8

with set screws
o SB2

This is a deep grooved ball bearing insert with spherical O.D. comes from the factory pre-lubricated with FYH grease. This bearing can be ordered in either re-lube style or sealed for life. The re-lube style has a grease groove and grease holes on the O.D. while the lubed for life does not. The SB series has the same load ratings as a UC bearing but has a narrow inner ring, and uses a one piece seal and slinger design rather than a separate seal and slinger. This insert affixes to the shafting using two set screws at 120 degrees apart. To order this same bearing with a cylindrical O.D. use the designation SBB.

8.8 SU INSERTS (SMALL SIZE)



SU



SU-S6

with set screws

- o SU0...Standard type
- o SU0-S6...Stainless steel

This deep groove ball bearing insert is intended for very light loads and is used in light duty conveying applications as part of our Clean Series. This bearing has a spherical O.D. and comes pre-lubricated from the factory. These inserts have a spherical O.D. with a wider inner ring and have no grease groove or grease holes for re-lubrication. Two setscrews at 120 degrees apart affix this insert to the shafting. The SU-S6 bearing is constructed of stainless steel material and is used as part of our stainless Clean Series. The stainless material is superior in corrosion resistance compared to the normal clean series insert.



8.11 SC INSERTS

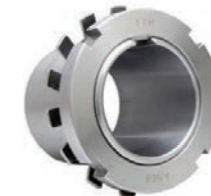


SC

o SC2

The SC series is a non-extending inner ring insert with a spherical outer-diameter which allows it to be mounted in a traditional housing. The bore tolerance is more precise than typical mounted bearings so press-fit shaft mounting can be accomplished.

8.12 ADAPTER



H2300X

Adapter
o H2300X

The H2300X adapter series are for use in the tapered-bore UK series. Proper assembly of adapter sleeves can create excellent holding power on the shaft.

8.3 NC INSERTS



NC

with concentric locking collar
o NC2 Duty: Standard

The FYH NU-LOC bearing features a concentric locking collar that allows for 360 degrees of locking contact. This deep groove ball bearing insert uses a grooved inner ring with a collar that incorporates a hex screw that is tightened to squeeze equally against the inner ring. The NU-LOC insert has a spherical O.D. and has grease grooves and grease holes for re-lubricating. The roundness of the ball path created by the NU-LOC bearing results in better operation and longer life. The collar is designed to prevent shaft marring and burring that can occur with other locking options.

8.4 NA INSERTS



NA

with eccentric locking collar
o NA2

This deep grooved ball bearing insert with rubber seal and metal slinger comes pre-lubricated with FYH grease. This insert incorporates a wide inner ring design with an eccentric locking collar for securing the insert to the shafting. The insert has grease holes and a grease groove on the outer ring for re-lubrication. The spherical O.D. allows this insert to be installed in a wide range of housings. When the insert is affixed to the shaft, the eccentric collars' elliptical shape meshes with the elliptical surface of the inner ring. The turning of the inner ring locks the shafting in place and a setscrew is tightened to keep it from slipping.

the eccentric collars' elliptical shape meshes with the elliptical surface of the inner ring. The turning of the inner ring locks the shafting in place and a setscrew is tightened to keep it from slipping.

8.6 SA INSERTS



SA



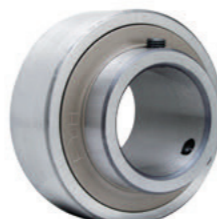
SA-F

with eccentric locking collar
o SA2, SA2-F

This deep grooved ball bearing unit with spherical O.D. is the same as the SB type insert, but uses an eccentric locking collar for affixing to the shafting. This insert comes from the factory pre-lubricated with FYH grease. This bearing can be ordered in either re-lube style or sealed for life. The re-lube style has a grease groove and grease holes on the O.D. while the lubed for life does not. This series also has a re-lube backside style. The backside re-lube is designated by an F in the suffix to be compatible with others in the industry. When the insert is affixed to the shaft, the eccentric collars' elliptical shape meshes with the elliptical surface of the inner ring. The turning of the inner ring locks

the shafting in place and a setscrew is tightened to keep it from slipping. To order this same bearing with a cylindrical O.D use the designation SAA.

8.7 RB INSERTS



RB

with set screws, cylindrical O.D.
o RB2

This deep groove ball bearing insert with a rubber seal and metal slinger come pre-lubricated with FYH grease. The RB series has a cylindrical O.D and has the same dimensions as the ER series but does not have a snap ring for locating or a grease groove and grease holes for re-lubrication. The RB series uses two FYH Bullet Point type setscrews at 120 degrees apart to affix it to the shafting.

8.9 ER INSERTS



ER



ERC

with set screws, cylindrical OD lubricating mechanism, locating snap ring and snap ring groove
o ER2, ERC2

This deep groove ball bearing insert with a rubber seal and metal slinger come pre-lubricated with FYH grease. The ER series has a cylindrical O.D. with grease groove and grease holes outer ring for re-lubrication. The ER series uses two FYH Bullet Point type setscrews at 120 degrees apart to affix it to the shafting. The ER bearings have a snap ring on the outer ring to help make locating the bearing a simple task during installation.

- o ERC with NU-LOC concentric locking collar style is also available.

8.10 SBB, SAA INSERTS



SBB-RK



SAA-F

with set screws, cylindrical O.D.
o SBB2, SAA2-F

The SBB and SAA insert series both have a cylindrical outer diameter for press-fit mounting directly into component machinery. They are not self-aligning or capable of being mounted into traditional housings.

BEARINGS FOR SPECIAL CONDITIONS



SERIES & MODELS



Reliability of machinery or equipment can be improved by selecting and using units optimal for the application and operating conditions.



- o High / Low Temperature Series



- o Corrosion Resistant Series (Stainless, Plastic, Nickel plated Units)



- o Air Handling Series (S3 & S5 Bearing Units, NU-LOC Units)



- o Dust Resistant Units (Triple lip seal inserts, Felt seal inserts)



- o Dirt Resistant Units (Tight Triple lip seal inserts, Units with Covers)



- o Tougher casting Series (Ductile iron housing)

- o Compact and lightweight Series (Small die cast Units, Lightweight casting Units, Stamped Units)

HIGH & LOW TEMPERATURE SERIES



o suffix codes - High temperature: D1K2 & D9K2, Low temperature: D2K2

For applications that require bearing units to be used at a higher or lower temperature range than our standard models FYH offers several options. For high temperature units that require lubrication please specify D1K2 as a suffix to the standard part number. For high temperature units that do not require lubrication specify D9K2. The D9K2 insert uses a fluoro-grease that allows for excellent heat resistance and operation with minimal maintenance.

Specifications of High / Low Temperature Series						
Category	Suffix Code	Operating Temp Range °C	Grease	Seal Material	Bearing Internal Clearance	
					UC type	UK Type
Standard	-	-20 to 100	Lithium Complex	Nitrile	CN	C3
Cold resistant	D2K2	-50 to 120	SH33M (Lithium)	Silicone	CN	C3
Heat resistant	D1K2	-40 to 180	U-RET EDM-1 (Diurea)	Silicone	C4	C5
Heat resistant	D9K2	-20 to 230	Demnum L-200 (Fluorinated)	Silicone	C4	C5

Specifications of Extreme High Temperature Series						
Category	Suffix Code	Operating Temp Range °C	Grease	Seal Material	Bearing Internal Clearance	
					UC type	UK Type
Heat resistant	D9P456Y2	-20 to 260	Demnum L-200 (Fluorinated)	-	C4	-
Extreme heat resistant	S6Y3	300 to 450	Solid graphite lubricant	-	Special	-



CORROSION RESISTANT SERIES



o Corrosion resistant for Washdown

The Corrosion Resistant Series is available in a wide array of sizes and styles, and units may be customized with a number of different specialized options to accommodate virtually any application. Federal compliance can be assured with FYH Bearing Units.

S6 STAINLESS INSERT



RINGS	Stainless steel (SUS 440C equivalent)
BALLS	SUS 440C
CAGE	SUS304
GREASE	H1 FOOD GRADE (FDA /USDA)
SEALS	NBR
SLINGER	SPCC + (zinc plated + trivalent chromate treatment)
ANTI-ROTATION PIN	SUS304
SET SCREWS	SUS304
CLEARANCE	C3
AVAILABLE SIZES	201X - 203X , 204 - 212

S7 PLATED INSERT



RINGS	SUJ2 + (zinc plated + trivalent chromate treatment)
BALLS	SUJ2
CAGE	NYLON
GREASE	H1 FOOD GRADE (FDA /USDA)
SEALS	NBR
SLINGER	SPCC + (zinc plated + trivalent chromate treatment)
ANTI-ROTATION PIN	SUS304
SET SCREWS	SCM435 + (zinc plated + trivalent chromate treatment)
CLEARANCE	C3
AVAILABLE SIZES	204 - 210



VP VF VFL VPA Thermoplastic Polyester Housings | H1, H9 Stainless Steel Housings (lost wax casting) | Z5 Nickel Plated Housings (cast iron & nickel plating)

STAINLESS STEEL SERIES



o Smooth surface. Water droplets do not remain.

The redesigned shape and laser marked housings make the surface of our new stainless-steel housings smoother than ever. The flatter surface ensures there is no place for water to pool after washdown. The smooth housing and solid base reduce the risk of bacterial growth.



o The corrosion-resistant unit re-design

Our new stainless units accept both stainless and plastic covers. The plastic covers include a drain hole to allow any water that gets inside the cover to drain out. FYH utilizes our original Floback seal that offers multiple lip protection during washdown.



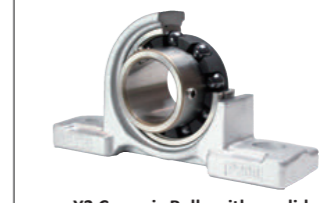
FYH's new stainless series is designed to stand up to demanding applications such as food & beverage, pharmaceutical packaging, fertilizer applications & salt spreaders.

All our housings are casted using SUS316 grade stainless steel which is much more corrosion resistant than 304 stainless. All of our stainless inserts come packed with H1 food grade grease and are perfect for food and beverage applications.

CERAMIC BALL UNITS



Y2 Ceramic Balls with Stainless Units



Y3 Ceramic Balls with a solid self-lubricating lubricant

- o Ceraball Features
 - o Reduced maintenance costs
Re-lubrication intervals can be significantly extended or eliminated altogether.
 - o Green bearings
Excessive grease discharge can be eliminated thereby contributing to a cleaner environment.
 - o Independent operation
Supplementary items such as cooling devices and automatic grease replenishment systems can be eliminated.
 - o Low friction
Low friction operation reduces the amount of energy required thereby saving electricity and money.
 - o High stress resistance
The threat of shattering from foreign matter incursion is greatly reduced which creates a safer working environment.
 - o Non-conductive
Electric arcing is eliminated.

Maintenance Cost Reduction Example on a Heat Treatment Furnace



The standard unit is re-lubricated with high temperature grease every day and completely changed every six months.



The Ceraball unit operates for three years without re-lubrication.



- Solutions for Extreme Environments**
- o High Temperature
 - o High Speed
 - o Vacuum
 - o Corrosion
 - o Clean



AIR HANDLING SERIES



Units for HVAC and air handling (suffix code: S3, S5)

Ball bearing units for blowers must meet the demands of high speed rotation, low vibration, low noise, and decreased temperature output. To meet these performance needs FYH produces the S3 and S5 series with tighter bore tolerances. S5 uses non-contact seals as well as an improved machining accuracy to cut down on heat, noise, and vibration.

Air Handling Standard	Air Handling Fit
	100% Noise Check
S3	P11 The anti-rotation pin

Air Handling Standard	Air Handling Fit
	100% Noise Check
	P11 The anti-rotation pin
	C2 clearance
	P18 bore tolerance
S5	K3 non-contact lip seal

Features of the air handling units

The air handling unit is manufactured with original fitting called the air handling fit which exists in the middle with fitting "H" which can be assembled more easily than a standard fit "J." In addition, "J" fit the standard is fit that there is not the need for the anti-rotation pin, but can be very secure in high speed applications by adding the anti-rotation pin. S3 and S5 bearings are sound tested in order to make sure the noise level is low enough to be suitable for high speed applications such as blowers.



DUST RESISTANT SERIES



Dust Resistant Units

The FYH Dust Resistant Units consists of a variety of supplemental sealing options that function extremely well in the exclusion of foreign matter. These options can work well by themselves or in combination with each other. From food processing and agricultural to wash-down and mining and aggregate, the FYH Dust From food processing and agricultural to wash-down and mining and aggregate, the FYH Dust Resistant Units can stand up to the toughest contamination challenges.



Triple-Lip Seals (suffix code: L3)

The L3 seal consists of a stamped steel shield with a molded NBR try-ply seal affixed to the inner portion of the shield, all of which is attached to the outer ring of the bearing. Excellent for resisting all types of contamination and is appropriate for low to moderate speeds.



Tight Triple-Lip Seals (suffix code: LT3)

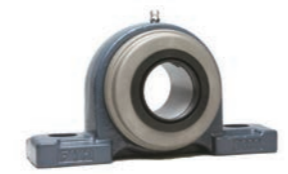
The LT3 Triple-Lip seal fits tighter than the standard L3 seal. The rotating torque of the LT3 seal is approximately double that of the standard L3 seal, and it is appropriate where contamination or moisture are very high and rotating speeds are very low.



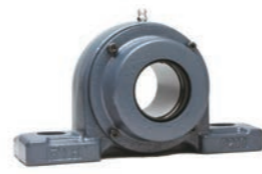
Felt Seals (suffi x code: K9)

The K9 bearing uses the standard contact seal & slinger with the addition of a felt disc sandwiched between the seal and the slinger. It offers less rotational torque than the triple-lip (L3) seal yet still provides great resistance to dust and dry contaminate.

Open Covers against Dust Ingress



PRESSED STEEL OPEN COVERS



CAST IRON OPEN COVERS

BULLET POINT SET SCREWS



ORIGINAL DESIGNED SET SCREW - BULLETPPOINT

The innovative FYH Bullet Point set screw is a one piece ball point set screw which is designed to expand the threads of the screw as the point of the screw contacts the surface of the shaft. The resulting force creates superior holding power especially where vibration is present.

Other set screws have larger contact areas with sharp edges at the point of the screw to bite into the shaft. However, these sharp edges damage more easily from vibration which creates a gap between the point of the set screw and the shaft. Once this gap is established, the set screw will begin to loosen.

The Bullet Point set screw design drastically reduces the potential for damage to both the set screw and shaft from normal use or for severe vibration, shock load, and high speed.

CLEAN SERIES



Rubber Seals for a Clean Environment

Combined in a compact bearing a special alloy of the bearing housing, it is oil-free of compact, lightweight unit. The purpose of the size and weight of the equipment and machinery, is a set screw system for easy installation of the shaft.

Other set screws have larger contact areas with sharp edges at the point of the screw to bite into the shaft. However, these sharp edges damage more easily from vibration which creates a gap between the point of the set screw and the shaft. Once this gap is established, the set screw will begin to loosen.

The Bullet Point set screw design drastically reduces the potential for damage to both the set screw and shaft from normal use or for severe vibration, shock load, and high speed.

CONCENTRIC LOCKING COLLAR



360° SHAFT CONTACT TRUE Concentric-LOC – NU-LOC

The FYH NU-LOC bearing grips the shaft more uniformly, which allows for 360 degrees of equalized locking contact. Compared to set screw bearings, the roundness of the ball path on the NU-LOC bearings results in better operation and longer life.

NU-LOC concentric locking collars are designed to prevent shafting from becoming marred or burred. A single standard hex head cap screw can be tightened quickly and easily, and NU-LOC bearings can replace either setscrew or eccentric locking collar inserts.

NU-LOC concentric locking collar with a single cap screw provides excellent holding power. The collar is installed over the slotted inner ring on the shaft concentrically. Quick & Easy Installation with a single hex cap screw.

Z LOCK SLEEVE



FYH has reinvented the adapter sleeve

This is the ball bearing version of our patented revolutionary locking system, Z LOCK. The new series is called ZK and utilizes a tapered bore UK insert with our original Z LOCK sleeve instead of a traditional adaptor sleeve. The units are pre-assembled at the factory and are ready to use straight out of the box unlike traditional units that have separate inserts and adaptor sleeves.



The installation of ZK units is extraordinary. ZK uses one key to tighten just two set screws by hand. ZK requires no torque charts and does not affect the inner clearance of the bearing at all.

BACKSIDE GUARD



Backside Guard

The nitrile rubber shields can be mounted between two and four bolt flange units and the equipment it is bolted onto. The backside guard protects bearings from dust and moisture and helps lead to longer bearing life in applications where this can be an issue.



SPHERICAL ROLLER BEARING UNITS



Introducing FYH Spherical Roller Bearing Units

More than sixty five years of experience and innovation in the field of mounted ball bearing units has lead to the development of mounted spherical roller units that cater to a wide range of applications and industries. Bearing & housing production are accomplished entirely by FYH while utilising only the highest quality materials available. Through meticulous design enhancements and careful material selection this heavy duty mounted roller series attains the designation of "Extra Tough".



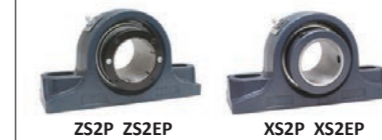
AVAILABLE AS ...

2-BOLT BASE TYPE SN PILLOW BLOCK UNITS



ZS2SN is Z LOCK spherical roller unit with SN style to replace SN plummer blocks. XS2SN has the same housing dimensions Bullet Point set screws at 120 degrees apart.

2-BOLT BASE PILLOW BLOCK UNITS (4-BOLT also available)



ZS2P with Z LOCK system. ZS2EP with Type E mounting dimensions. It can accommodate both a taper roller & spherical roller unit for most shaft sizes. XS2P and XS2EP utilizes Bullet Point setscrews at 120 degrees apart.

4-BOLT FLANGE UNITS



ZS4F with standard mounting dimensions for areas with limited space. ZS4EF with Type E tapered roller unit mounting dimensions. XS4F and XS4EF utilizes set screws at 120 degrees apart.

FLANGE CARTRIDGE UNITS



ZS4FC with pilot mounting dimensions for easy upgrade to a heavier duty series. XS4FC utilizes the setscrews at 120 degrees apart.

TAKE UP UNITS



ZST with rail slots compatible with many industrial frame sizes. XST utilizes setscrews at 120 degrees apart.



**ROLMAN
WORLD**

castalia suministros
industriales

**ROLMAN
WORLD
GROUP**

ROLMAN WORLD

P.O.Box: 261069
Jebel Ali, Dubai
United Arab Emirates
Tel: +971 4 887 3700
Fax: +971 4 887 3701
sales@rolman.com

**ROLMAN WORLD
TRADING LLC**

P.O.Box: 25054
Baniyas Square, Deira
Dubai, United Arab Emirates
Tel: +971 4 222 2732
Fax: +971 4 222 3495
rwt@rolman.com

**BEARING WORKS
TRADING CO.**

P.O.Box: 255530
Owaidha Industrial Area,
Riyadh - 11353
Kingdom of Saudi Arabia
Tel: +966 11 213 5235
Fax: +966 11 213 6161
sales@bw-saudi.com

**INTERNATIONAL BEARING
HOUSE CO.**

P.O.Box: 41583
Bab Makkah, Al Zahid Building
Jeddah - 21531
Kingdom of Saudi Arabia
Tel: +966 12 642 8620
Fax: +966 12 645 8113
sales@ibh-saudi.com

**ROLMAN WORLD
IMPORT & EXPORT**

Cite Douzi 04 N:323 (Souman)
Bab Ezzouar,
Algiers, Algeria
Tel: +213 21 24 38 75
Fax: +213 21 24 39 16
rolmanworlddz@yahoo.fr

ROLMAN WORLD

P.O.Box: 40412
SYS 019 Sayer Building
Barwa Commercial Avenue
Industrial Area
Doha, Qatar
Tel: +974 4005 2450
Fax: +974 4001 6423
sales-qatar@rolman.com

**BEARING WORLD &
TRADE CO.**

P.O.Box: 330480
389 Prince Hassan St.
Al Quesmeh, Amman, Jordan
Tel: +962 6 477 1115
Fax: +962 6 477 1113
yousef@bearingworldjo.com

**ROULEMENT MONDIALE
TUNISIA**

Zone industrielle Mégrine, Saint Gobain
Lot N°10, Tunisie
Tel : +216 79 297 602 / 603
Fax : +216 79 297 604
sales-tn@rolman.com

BEARING WORLD CO.

Al Sinak
Baghdad, Iraq
Tel: +964 1 816 7427
hadinskiraq@gmail.com

ROULEMENT MONDIAL

Boulevard Des Armees
Treichville, 05 BP 758 Abidjan 05
Cote d'Ivoire
Tel: +225 2124 6645 / 6650
sales-civ@rolman.com

**ROULEMENT MONDIAL
SARL.**

New Hankach Street,
Baouchriyeh, Dora,
Beirut, Lebanon
Tel: +961 76 994 811 / 76 580 757
sales-lb@rolman.com